

Weekly Discovery

We SHARE to inspire and ignite ideas!

22 August 2016 – 26 August 2016

CONNECTIVITY

Smartphone-Connected Contact Lenses Give New Meaning to 'Eye Phone'

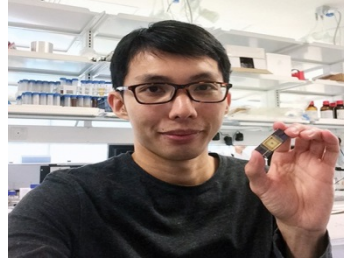


University of Washington researchers have developed a new [technology](#) of allowing contact lenses and brain implants to interact with other devices.

Source: [Livescience.com](#) (19 August 2016)

INNOVATORS

35 Innovators Under 35



This year's MIT's young Innovators featured SUTD's Desmond Loke with his ingenious creation of Phase-change memory. This award recognises outstanding individuals who are poised to be leaders in their fields.

Source: [MIT Technology Review](#) (2016)

MATERIALS

Researchers test-bed new bendable concrete that is stronger and more durable

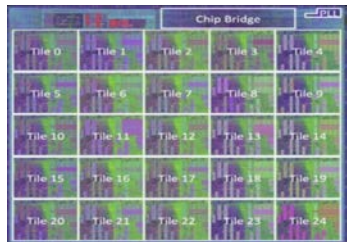


Researchers from Singapore have invented a new type of concrete called ConFlexPave that is bendable and will reduce construction time for road works and new pavements.

Source: [Sciencedaily](#) (17 August 2016)

MICROCHIP TECHNOLOGY

New microchip demonstrates efficiency and scalable design

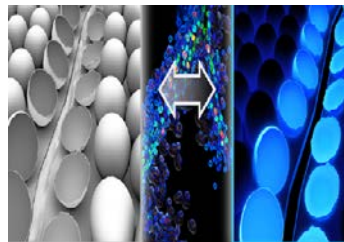


Researchers at Princeton University recently developed a new computer chip that can be connected together into a single system which reduces energy consumption and increase performance.

Source: [Sciencedaily](#) (22 August 2016)

PROCESS TECHNOLOGY

New method to identify microscopic failure (Update)



Researchers from the Beckman Institute for Advanced Science and Technology have discovered a new way to identify microscopic damage in polymers and composite materials prior to their complete failure. In addition read this [Journal Article](#).

Source: [Phys.org](#) (17 August 2016)

SMART AVIATION

Future of Urban Mobility

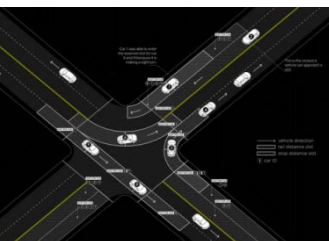


To tackle the city rush-hour traffic, Airbus Group has started working on autonomous flying vehicles for individual passengers.

Source: [Airbusgroup.com](#) (2016)

TRANSPORTATION SYSTEMS

Light Traffic



Researchers have developed a slot-based intersection system that could replace traffic lights. Read more about this [system](#).

Source: MIT [Senseable Lab](#) (2016)

URBAN PLANNING

Drone Highway



Discover the future of 21st century urban development in Bao'an, Shenzhen, China. Where a multimodal transportation system that integrates automated technologies like drones, auto-pilot vehicles and high-speed transit.

Source: [Domus](#) (22 August 2016)

WOMEN IN ENGINEERING

Why Do So Many Women Who Study Engineering Leave the Field?



Discover the reasons behind the lack of women in engineering. Some of the reasons include unequal opportunities and negative stereotyping.

Source: [Harvard Business Review](#) (23 August 2016)

To view past Weekly Alerts [CLICK HERE](#)

For more articles or in-depth research, contact us at library@sutd.edu.sg!

An SUTD Library Service©2016